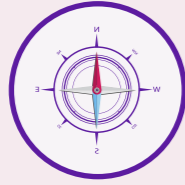


# PROJECT HIGHLIGHTS:



Embrace a meticulously planned DTCP layout



Choose from 100% Vaastu-compliant plots



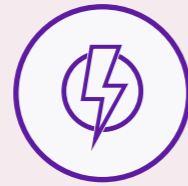
Clubhouse Swimming Pool / Gym and Banquet Hall



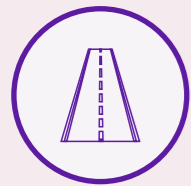
Underground Drainage System



Underground Water Lines



Electricity Cable System



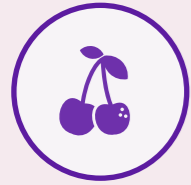
Cement Paved roads



Street Lights



Play Area



200 fruit-bearing trees



24 hrs. Security Personnel



Avenue Tree Plantation & Landscaped Garden



Swimming Pool



200 fruit-bearing trees

# IDEAL RESIDENTIAL HAVEN LOCATION HIGHLIGHTS:

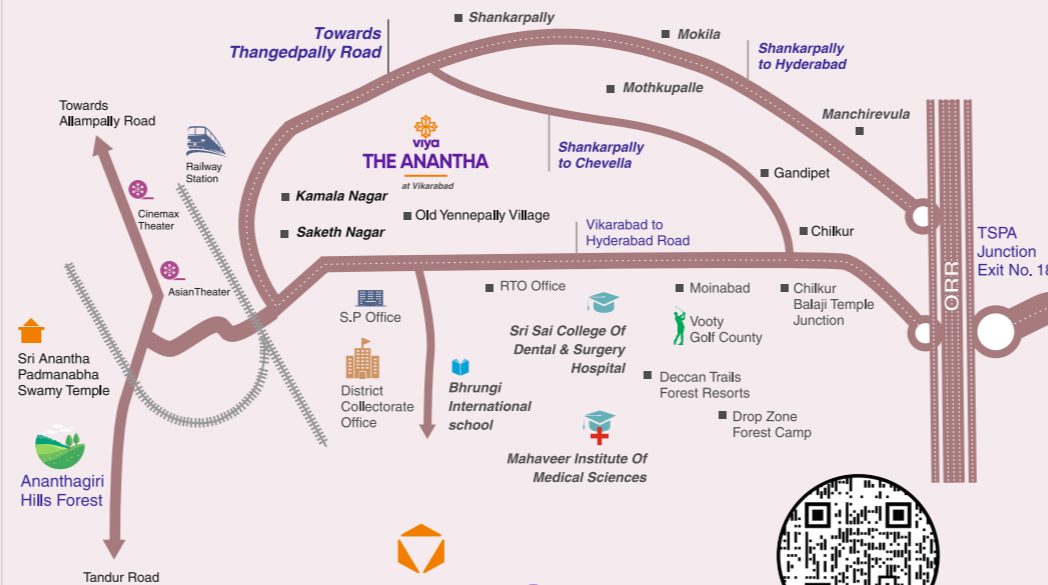
- Nestled amidst the picturesque Ananthagiri hills, our location is enveloped by lush forests, offering a pollution-free environment.
- Strategically located adjacent to Vikarabad District headquarters, our site ensures convenient access to schools, educational institutions, and leisure resorts.
- Proximity to both the railway and bus stations, coupled with easy connectivity to Hyderabad, enhances accessibility.
- Enjoy the serenity with a One hour drive from ORR (TSPA Junction) and relish the natural beauty of the 4000 Acres reserve forest in the neighborhood.
- Vikarabad, emerging as a tourist destination, adds a touch of charm, while existing residential communities surround the area.



Ananthagiri Hills



Sri Anantha Padmanabha Swamy Temple



Building Infinite Spaces



QR code for Anantha location map

Site : Sy.No. 6/P,7/P,8/P,340/P,343/P,344/P, Near Narsing Function Hall, Yennepally Village, Vikarabad, Telangana-501101

Corp Office: Sy. No. 371 & 409/P, Opp. Renuka Yellamma Temple, Bachupally Village, Hyderabad - 500 090., Telangana, India.

email: info@viyaventures.com | www.viyaanantha.com

For details please call: 767 4007 222

RERA No: P02100007645

Disclaimer: This brochure does not constitute an offer and/or acceptance and/or contract and/or agreement and/or transaction and/or any intention thereof and/or a disclosure under any statute of any nature whatsoever. The imagery used on the brochure may not represent actuals or may be indicative of style only. The information on this brochure is presented as general information and no representation or warranty is expressly or impliedly given as to its accuracy, completeness or correctness.

# YOUR CANVAS FOR FUTURE MEMORIES



# THE ANANTHA

at Vikarabad

# THE ANANTHA - TRANSFORMING THE LANDSCAPE OF VIKARABAD

The Anantha presents a 6.6-acre residential plotting layout situated in the heart of Vikarabad. Nestled at the foot of the picturesque Ananthagiri hills, this project is ideally located in Vikarabad town, offering affordable living for those desiring a tranquil and green escape from the city's hustle and bustle. Vikarabad, an economically independent town with thriving industries, commercial centers, and businesses, is rapidly emerging as a satellite town near the Greater Hyderabad Region, poised for substantial growth in the future.

**Total land** | **No. of** | **Plot sizes**  
**6.6 Acres** | **Plots 85** | **143.33 to 356 Sq. Yds**



## ABOUT VIYA VENTURES

Step into the world of "Viya Ventures," a distinguished real estate enterprise devoted to transforming dreams into tangible realities. Centered in the lively city of Hyderabad, we seamlessly fuse innovation with functionality to craft spaces that harmonize with contemporary lifestyles. Delve into our thoughtfully curated plots and apartments, ensuring not just residences but a seamless living experience. At Viya Ventures, we pledge to lay the groundwork for your aspirations. Our promoters boast over 20+ years of expertise, exemplified by acclaimed projects like **Forest Ridge, Canvas, Shantivan, Shantione Farm Apartments, Sindhuvan**, and more.

## KEY CONNECTIVITY POINTS:

- **S.P Office:** 3 minutes away, 700 m distance
- **Vikarabad Junction:** 5 minutes away, 1.7 kms distance
- **Mahaveer Institute of Medical Sciences:** 5 minutes away, 1.9 kms distance
- **Bhrunji International School:** 5 minutes away, 2 kms distance
- **Vikarabad RTO Office:** 5 minutes away, 2.2 kms distance
- **New District Collector Office:** 6 minutes away, 2.3 kms distance
- **Railway Station:** 8 minutes away, 2.7 kms distance
- **Medicure Hospitals:** 8 minutes away, 2.9 kms distance
- **R.T.C Bus Stand:** 8 minutes away, 3.2 kms distance
- **Sri Sai College of Dental Surgery:** 7 minutes away, 3.4 kms distance
- **SAP Arts & Science College:** 10 minutes away, 3.7 kms distance
- **Vooty Golf County:** 11 minutes away, 6.7 kms distance
- **Ananthagiri Hills:** 20 minutes away, 9 kms distance
- **Deccan Trails Forest:** 20 minutes away, 9.7 kms distance
- **Drop Zone Forest Camp:** 21 minutes away, 10.8 kms distance